

## OTHER ACCESSORIES



### Simulators **TARAsim**

The simulators are designed for checking the input at the transmitter for amperometric sensors of the TARA brand. They are available for our sensors with both analogue and digital output signal.



### Measuring & Control Unit **TARAtrol**

The measuring and control unit has been specially adjusted to the requirements of our sensors. It goes without saying that we offer the service of factory-adjusting all settings on the device for the sensor to be connected.



### Measuring & Control Boards **TARAsys**

For the fast and easy installation and commissioning of a complete measuring unit, we offer measuring boards on which the flow chamber and the measuring & control unit are factory-assembled and where the respective connections are wired in the measuring & control unit.

## SELECTION OF ACCESSORIES

You can find a detailed overview of our selection of accessories in the Accessories section of our website.

[www.reiss-gmbh.com](http://www.reiss-gmbh.com)

## CONTACT



### Reiss GmbH

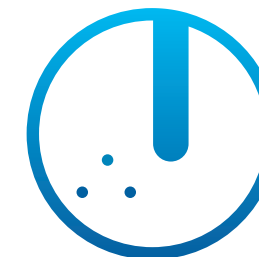
Eisleber Str. 5  
D – 69469 Weinheim

Fon +49 (0) 6201/25939-0  
Fax +49 (0) 6201/25939-10

Email: [info@reiss-gmbh.com](mailto:info@reiss-gmbh.com)  
[www.reiss-gmbh.com](http://www.reiss-gmbh.com)

 **Reiss GmbH**  
we create sensor solutions

## OUR PRODUCTS



### Sensors

Our sensors measure various disinfectants dissolved in water in diverse applications (swimming pools, drinking water, service water, CIP systems, cooling and waste water etc.). They are offered with various measuring ranges and output signals. We also supply customised versions of our sensors upon request. Our range of products currently includes the brands described below. They feature a variety of performance profiles and thus can be used for a wide range of applications\*

### TARAbase, TARAline, TARatec & TARAsens

Our sensors are subdivided into two groups: Membrane-covered sensors and non-membrane-covered sensors. This also allows their use in special applications in areas with high pressures, temperatures and concentrations of the disinfectant.

\* You can find more detailed information about our sensors in our product flyer "Sensors" or on our website.

### What do you want to measure?

### We also offer sensors for the following disinfectants:

- |                    |                     |            |
|--------------------|---------------------|------------|
| • Chlorine         | • Peracetic acid    | • Bromine  |
| • Chlorine dioxide | • Ozone             | • Chlorite |
|                    | • Hydrogen peroxide |            |

## ACCESSORIES

## FLOW CHAMBERS

Flow chambers designed for the installation of an amperometric sensor of the TARA brand

### TARAflow FLC-1.1

#### Process conditions

- max. temperature: 45 °C
- max. pressure: 8 bar

#### Features

- Valve for flow regulation
- Sampling valve
- 2 different switching points for the flow selectable
- Flow monitoring (optional)



### TARAflow FLC-3

#### Process conditions

- max. temperature: 70 °C
- max. pressure: 8 bar

#### Features

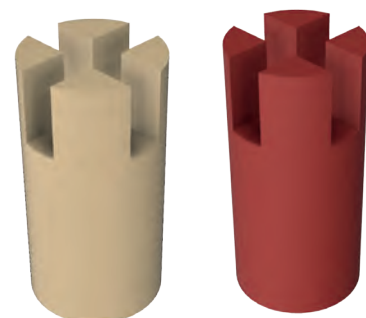
- Valve for flow regulation
- Sampling valve
- 2 different switching points for the flow selectable
- Flow monitoring (optional)



## ACCESSORIES

### Flow indicator

- Switching point at a flow rate of about 15 l/h (beige)
- Switching point at a flow rate of about 45 l/h (red)
- Can be replaced at any time



### Flow monitoring device

- Inductive proximity switch
- Can be retrofitted at any time



## SENSOR ACCESSORIES

### Cleaning equipment RV 1

Automatic mechanical cleaning of electrodes for the chlorine sensors of the TARAsens brand

#### Special properties

- Reduces the maintenance effort
- Can be retrofitted at any time



### TARAcon Sensor cable

4-pin connector



5-pin M12 connector



## SPARE PARTS

It goes without saying that we also offer spare parts for our sensors, such as membrane caps and electrolyte. On our website, you can find detailed information with the designation and article number of the spare part in the data sheet of the respective sensor.

## RECONDITIONING

You can also send in your sensors for inspection and/or reconditioning. If you wish to send in your sensor, please complete the declaration of clearance\* and enclose it with your shipment.

If you wish to send in a sensor with Modbus signal transmission, we kindly request you to also enclose the completed form and state your Modbus parameter\* settings.

\* You can find the respective forms in the download section on our website.